



City of Bowie

15901 Excalibur Road
Bowie, Maryland 20716

January 9, 2019

NOTICE OF STAKEHOLDERS MEETING

Proposal: Mixed-Use Redevelopment of Sears Property, Bowie Town Center

Site Area: 10.8 Acres

Current Zoning: M-A-C (Major Activity Center)

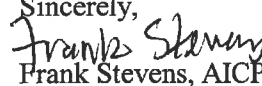
**Location: North and West of Evergreen Parkway and
South of MD Route 197**

Owner: Seritage SRC Finance, LLC

Dear Business Owner, Resident or Interested Party:

Seritage SRC Finance, LLC, is the new owner of the 10.8-acre site where the Sears department store is currently located in the Bowie Town Center, and plans to redevelop the property as a mixed-use project to potentially include: multi-family residential, a small amount of street level retail square footage, a small office building and possibly a small hotel. The property is zoned M-A-C (Major Activity Center), where the uses envisioned under the redevelopment project are permitted by right under the Prince George's County Zoning Ordinance. The site of the proposed development is located north and west of Evergreen Parkway, and south of MD Route 197. No illustrative plans for this mixed-use project have been submitted at this time.

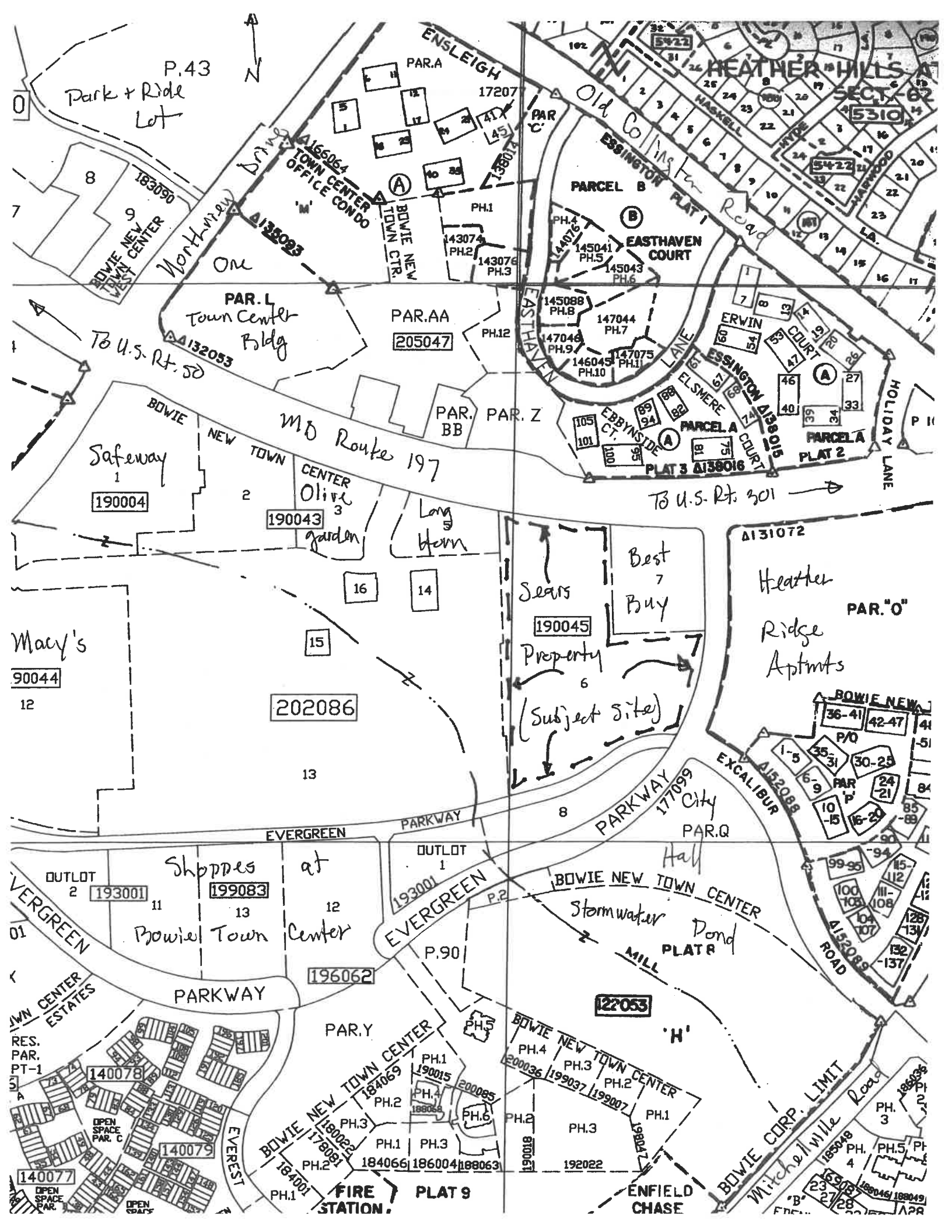
A **Stakeholders Meeting** to discuss the concept of mixed-use redevelopment on the site has been scheduled for **Wednesday, January 23, 2019 at 7:00 p.m. in the Council Chambers** in Bowie City Hall, which is located at 15901 Excalibur Road, Bowie, MD. Your attendance and participation are encouraged at this meeting. In the interim, should you have any questions regarding this project, please do not hesitate to contact me during business hours at 301-809-3047.

Sincerely,

Frank Stevens, AICP
Department of Planning and
Economic Development

Attachment (over)

cc: Mr. Robert J. Antonetti, Jr., Shipley and Horne, P.A.
Mr. Christopher Rizzi, PLA, ASLA, Bohler Engineering, PC
Mr. Robert Ursini, Seritage Growth Properties

t:/stakeholdersmeetingnotice.doc



P.43
Park + Ride Lot

Northway Drive
ON

ALEXANDER TOWN CENTER OFFICE CONDO

PAR. L
Town Center Bldg

Safeway
190004

MD Route 197
CENTER Olive garden

Sears
Best Buy
Property
(Subject site)

Heather Ridge Apts
PAR. "O"

Macy's
90044

Shoppes at Bowie Town Center

BOWIE NEW TOWN CENTER
Stormwater Pond

RES. PAR. PT-1
140078
140079
140077
OPEN SPACE PAR. C
OPEN SPACE PAR. V
OPEN SPACE

BOWIE NEW TOWN CENTER
PAR. Y
PH.1
PH.2
PH.3
PH.4
PH.5
PH.6
184069
184066
186004
188063
190015
188068
200085
187001
178091
178092
178093
178094
178095
178096
178097
178098
178099
178100
178101
178102
178103
178104
178105
178106
178107
178108
178109
178110
178111
178112
178113
178114
178115
178116
178117
178118
178119
178120
178121
178122
178123
178124
178125
178126
178127
178128
178129
178130
178131
178132
178133
178134
178135
178136
178137
178138
178139
178140
178141
178142
178143
178144
178145
178146
178147
178148
178149
178150
178151
178152
178153
178154
178155
178156
178157
178158
178159
178160
178161
178162
178163
178164
178165
178166
178167
178168
178169
178170
178171
178172
178173
178174
178175
178176
178177
178178
178179
178180
178181
178182
178183
178184
178185
178186
178187
178188
178189
178190
178191
178192
178193
178194
178195
178196
178197
178198
178199
178200

BOWIE NEW TOWN CENTER
PAR. H
PH.1
PH.2
PH.3
PH.4
PH.5
120053
120054
120055
120056
120057
120058
120059
120060
120061
120062
120063
120064
120065
120066
120067
120068
120069
120070
120071
120072
120073
120074
120075
120076
120077
120078
120079
120080
120081
120082
120083
120084
120085
120086
120087
120088
120089
120090
120091
120092
120093
120094
120095
120096
120097
120098
120099
120100
120101
120102
120103
120104
120105
120106
120107
120108
120109
120110
120111
120112
120113
120114
120115
120116
120117
120118
120119
120120
120121
120122
120123
120124
120125
120126
120127
120128
120129
120130
120131
120132
120133
120134
120135
120136
120137
120138
120139
120140
120141
120142
120143
120144
120145
120146
120147
120148
120149
120150
120151
120152
120153
120154
120155
120156
120157
120158
120159
120160
120161
120162
120163
120164
120165
120166
120167
120168
120169
120170
120171
120172
120173
120174
120175
120176
120177
120178
120179
120180
120181
120182
120183
120184
120185
120186
120187
120188
120189
120190
120191
120192
120193
120194
120195
120196
120197
120198
120199
120200

BOWIE CORP. LIMIT
Mitchellville Road
PH. 1
PH. 2
PH. 3
PH. 4
PH. 5
PH. 6
PH. 7
PH. 8
PH. 9
PH. 10
PH. 11
PH. 12
PH. 13
PH. 14
PH. 15
PH. 16
PH. 17
PH. 18
PH. 19
PH. 20
PH. 21
PH. 22
PH. 23
PH. 24
PH. 25
PH. 26
PH. 27
PH. 28
PH. 29
PH. 30
PH. 31
PH. 32
PH. 33
PH. 34
PH. 35
PH. 36
PH. 37
PH. 38
PH. 39
PH. 40
PH. 41
PH. 42
PH. 43
PH. 44
PH. 45
PH. 46
PH. 47
PH. 48
PH. 49
PH. 50
PH. 51
PH. 52
PH. 53
PH. 54
PH. 55
PH. 56
PH. 57
PH. 58
PH. 59
PH. 60
PH. 61
PH. 62
PH. 63
PH. 64
PH. 65
PH. 66
PH. 67
PH. 68
PH. 69
PH. 70
PH. 71
PH. 72
PH. 73
PH. 74
PH. 75
PH. 76
PH. 77
PH. 78
PH. 79
PH. 80
PH. 81
PH. 82
PH. 83
PH. 84
PH. 85
PH. 86
PH. 87
PH. 88
PH. 89
PH. 90
PH. 91
PH. 92
PH. 93
PH. 94
PH. 95
PH. 96
PH. 97
PH. 98
PH. 99
PH. 100
PH. 101
PH. 102
PH. 103
PH. 104
PH. 105
PH. 106
PH. 107
PH. 108
PH. 109
PH. 110
PH. 111
PH. 112
PH. 113
PH. 114
PH. 115
PH. 116
PH. 117
PH. 118
PH. 119
PH. 120
PH. 121
PH. 122
PH. 123
PH. 124
PH. 125
PH. 126
PH. 127
PH. 128
PH. 129
PH. 130
PH. 131
PH. 132
PH. 133
PH. 134
PH. 135
PH. 136
PH. 137
PH. 138
PH. 139
PH. 140
PH. 141
PH. 142
PH. 143
PH. 144
PH. 145
PH. 146
PH. 147
PH. 148
PH. 149
PH. 150
PH. 151
PH. 152
PH. 153
PH. 154
PH. 155
PH. 156
PH. 157
PH. 158
PH. 159
PH. 160
PH. 161
PH. 162
PH. 163
PH. 164
PH. 165
PH. 166
PH. 167
PH. 168
PH. 169
PH. 170
PH. 171
PH. 172
PH. 173
PH. 174
PH. 175
PH. 176
PH. 177
PH. 178
PH. 179
PH. 180
PH. 181
PH. 182
PH. 183
PH. 184
PH. 185
PH. 186
PH. 187
PH. 188
PH. 189
PH. 190
PH. 191
PH. 192
PH. 193
PH. 194
PH. 195
PH. 196
PH. 197
PH. 198
PH. 199
PH. 200