

Spangler Lane Stormwater Pond Water Quality Retrofit Design



July 25, 2018

Project Background MS4 Permit / NPDES

- Clean Water Act – 1972
 - Established structure for regulating discharges of pollutants into the waters of the United States permittee
 - Required permit to discharge from a point source into surface waters.
- EPA – Established Regulations Under CWA
 - Established National Pollutant Discharge Elimination System (NPDES) permit program.
 - Developed national water quality criteria for pollutants in surface waters.
- MDE – Implements NPDES Program
 - Issues Municipal Separate Storm Sewer System (MS4) Permits

3

Introductions

- **George Stephanos**
Director, City of Bowie, Department of Public Works
- **Pat Rush**
Project Manager, City of Bowie, Department of Public Works
- **Tiffany Wright**
Watershed Manager, City of Bowie, Planning Department
- **Justin Gupta, PE**
Water Resources Engineer, Rummel, Klepper & Kahl, LLP (RK&K)

2

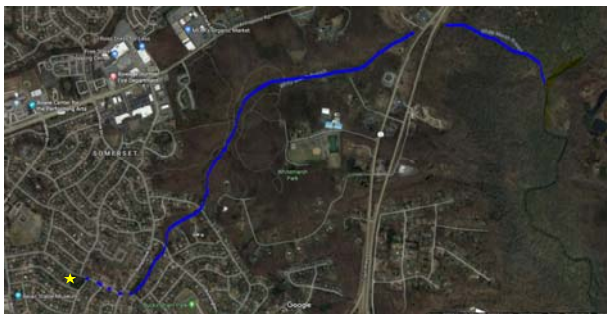
City of Bowie, MS4 Permittee

- Bowie has an extensive storm sewer system
- Maryland Department of Environment (MDE) issues and oversees MS4 Permit
- Stormwater discharged from Bowie ultimately drains to Chesapeake Bay



4

Storm Sewers Discharge



9

Existing Conditions



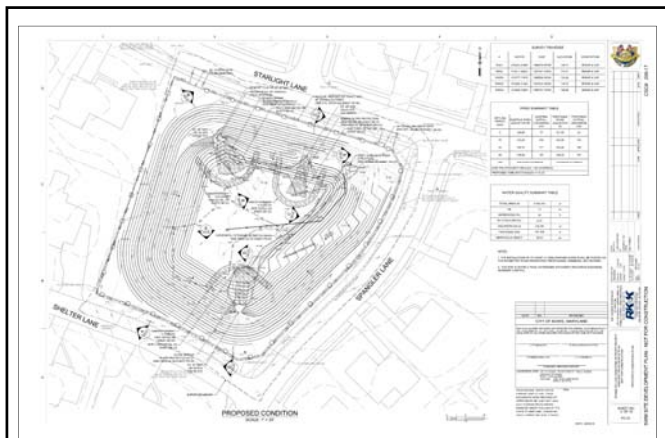
11

Project Goals

- Convert existing dry pond to extended detention wet pond to provide water quality treatment
- Maintain or improve discharge rate to protect receiving stream
- Improve long term maintenance ease/costs
- Increase biodiversity



10



Proposed Design

5



Approximate Timeline

Milestone	Time Frame
Public Meeting	July 2018
Design Phase	February 2018 to November 2018 <small>*dependent upon permit approval</small>
Construction	Spring 2019




15

Midwood SWM Pond Retrofit






14

Questions?

FOR MORE INFORMATION:

Pat Rush - 240.544.5689
prush@cityofbowie.org

Tiffany Wright - 301.809.3043
twright@cityofbowie.org




16